



Administration Office

1750 Plainfield Road  
LaGrange, IL 60525  
708.246.3085  
[www.district106.net](http://www.district106.net)

Dear LaGrange Highlands Neighbor,

Highlands School District 106 is about to begin an exciting construction project. Due to current and projected student enrollment increases, we are in need of additional classroom spaces. This project will also provide us with the opportunity to renovate our library and create a Science, Technology, Engineering, and Math center for the elementary and middle school. One of the things that makes LaGrange Highlands special is the quality of our schools, and we are very excited about the new learning opportunities this project is going to provide our students.

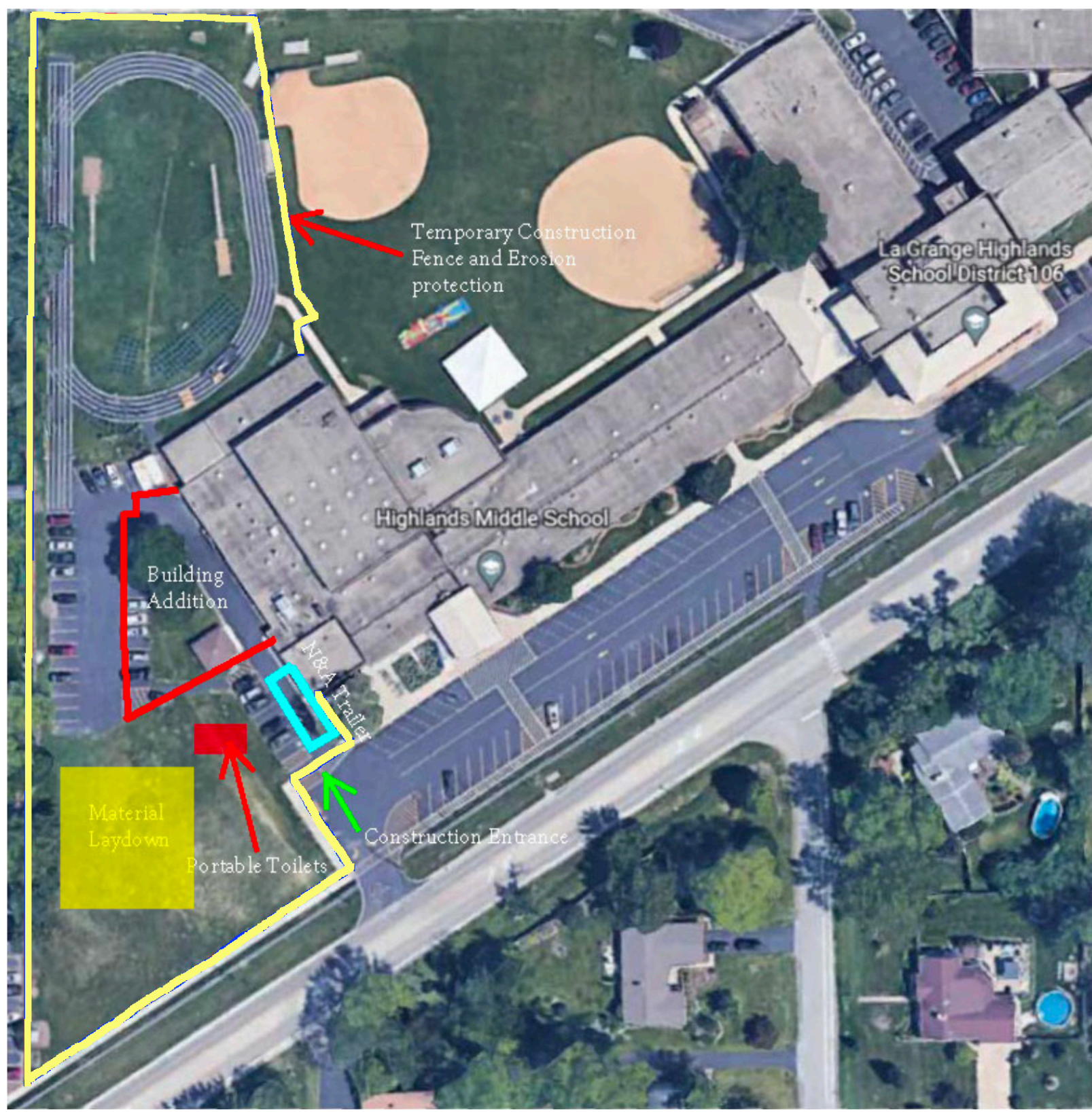
Over the past year, the D106 School Board has been carefully considering information to determine the need and scope of this project. A detailed record of this information can be found on our district website at [www.district106.net](http://www.district106.net).

General construction information about this project is attached. Preparations for construction will begin next week, with groundbreaking taking place on September 6th. If you have any questions, please do not hesitate to contact me at [jmunch@district106.net](mailto:jmunch@district106.net) or 708-485-3176.

## **General Construction Information**

- Noise:
  - All construction activities will abide by local noise ordinances.
  - Anticipated working hours are as follows:
    - Interior construction will take place from 6:00am to 4:00pm Monday through Saturday. Some exceptions may apply to these time periods.
    - Outside construction activities will take place from 7:00am to 5:00pm Monday through Friday, 8:00am to 4:00pm on Saturdays. Some exceptions may apply to these time periods.
- Dust
  - All construction activities will follow local and OSHA guidelines, including those that apply to limit dust on the surrounding areas.
- Soil Erosion:
  - Soil Erosion protection will be installed around the entire perimeter of the project site per the approved stormwater pollution prevention plan (SWPPP).
  - Regular inspections will occur to ensure that all SWPPP regulations are being met
- Road Use:
  - Construction deliveries will arrive on the southeast side of the project.
  - West Plainfield Road will be utilized for main construction traffic, along with 55<sup>th</sup> street and Wolf Road.
- Security & Safety:
  - All construction activities will follow local and OSHA guidelines to ensure the safety of everyone.
  - All entrances will be securely locked at the end of the day. The location of the construction trailer helps ensure that the project can be easily monitored throughout the day.

Below is an image of our proposed site utilization plan. This plan can change as construction activities require and the project progresses.



Temporary Construction  
Fence and Erosion  
protection

La Grange Highlands  
School District 106

Highlands Middle School

Building  
Addition

NBA Trailer

Material  
Laydown

Portable Toilets

Construction Entrance